

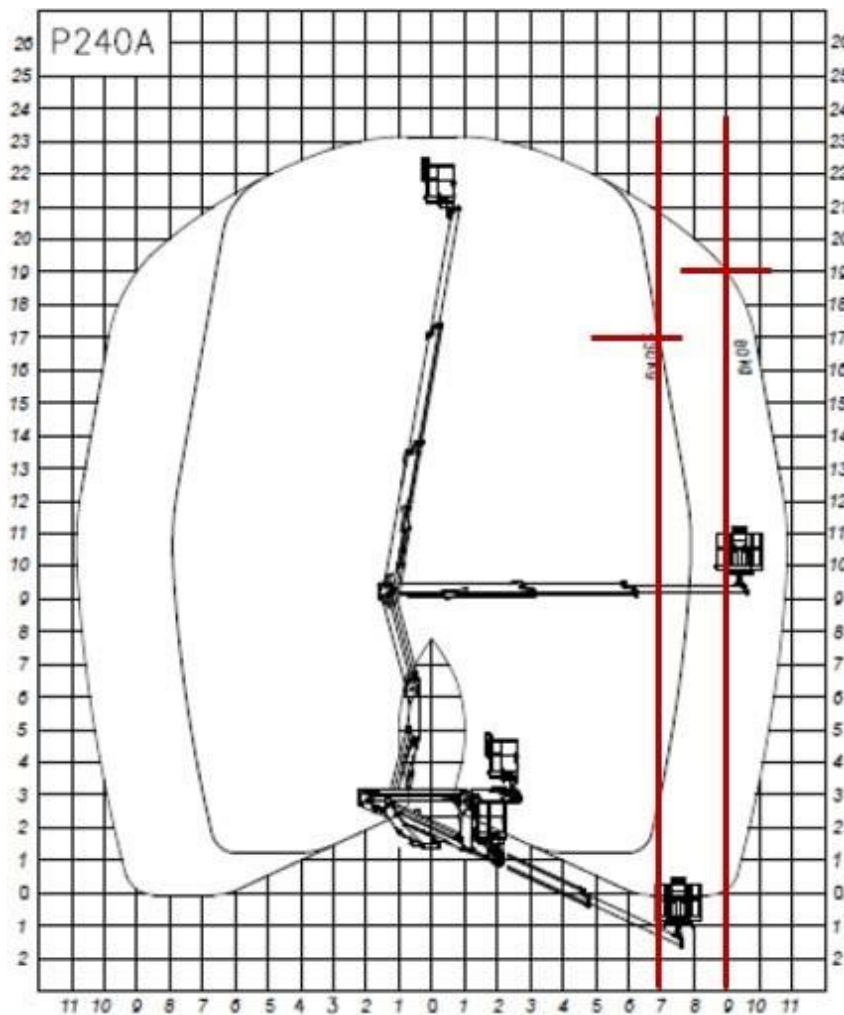


PALFINGER PLATFORM P240A

TECHNICAL SPECIFICATION OF AERIAL LIFT P240A

Main characteristic of PALFINGER P240A is its **outstanding 7m outreach at 17m height with 230kg** in the basket and 19m height at 9m outreach with 80kg basket

Working Height	Basket capacity	Lateral Outreach	Basket dimensions	Angle of Main Boom	Turntable rotation	Manufacturer
19m at 9m outreach Approx. 23.5m in total	230kg	10.7m	1400mm L 850mm W 1100mm H	-25° to +80°	370°	PALFINGER





SPIDER ACCESS

Heavy Equipment Rental L.L.C

+971 56 7787777
41267 | Dubai | U.A.E
www.spideraccess.ae

PALFINGER P240A platform can work with a 7m outreach up to 17m height with 230kg in the basket. It can also work with 9m outreach at a height of 19m with 80kg in the basket. As such, this platform is suitable for far **more jobs** than competitor platform



- Aluminum basket of 1400mm length x 850mm width x 1100mm height with **automatic basket levelling** and **double access** point from the ground
- Basket rotation 2 x 90° - basket can rotate 90° to the right and 90° to the left – **allows to pass the pole and rotate the basket to position the operator below the 2nd light (see picture below)**





SPIDER ACCESS

Heavy Equipment Rental L.L.C

+971 56 7787777
41267 | Dubai | U.A.E
www.spideraccess.ae

- Fully hydraulic controls from the basket and at ground level. Control panel in the basket is covered by an



aluminum plate. Below portion of basket is covered by aluminum chequered plate for safety.

- Safety features:**
 - Engine on/off control from the basket and ground
 - Manual emergency descent controls
 - Emergency stop buttons: single press button in case of dangerous situation to stop the platform
 - Emergency hand pump
 - Outreach controlled by automatic limiting device
 - Flanged lock valves on all cylinders to prevent accident in case of hydraulic failure / hose failure
 - Planarity check device
 - Outrigger/boom interlock: prevents the platform being operated unless stabilizers are firmly on the ground
 - Outrigger resting plates with housing on platform floor
 - Electric hour meter
 - Fittings for safety belts on basket
 - Test button for signal lights on panels
- 4 hydraulic outriggers; vertical down; all with check valves
- 12 V socket on the basket – **allows to connect extra tools in the basket** (like wind speed monitoring; phone charger, etc.)



SPIDER ACCESS

Heavy Equipment Rental L.L.C

+971 56 7787777
41267 | Dubai | U.A.E
www.spideraccess.ae

- 230 V or 110 V / 16 A socket on the basket – **allows to connect and work with power tools (drills; etc.)in the basket**
- Max. pressure valves on hydraulic system.
- Special Toolbox mounted on the deck behind the cabin



- Installation on the ISUZU Double Cabin Truck including fixed sides (0.25m high); floor chequered plate; PTO and as per high quality PALFINGER standards with accessories. Painting: grit blasting SA 2.5 (40microns), primer epoxy-basedcoat, primer filler coat and 2 top coats of WHITE color.

SCOPE OF INSTALLATION:

- P240A will be installed on the Isuzu Double Cabin truck chassis.
- Production of adequate subframe and chequered plate for floor and cargo box with fixed sides of 250mm height; so that you can keep cones and other material inside.



- All hydraulic fittings and PTO to run the platform.
- 2 Nos. Revolving Beacon light at the rear.