

Specifications

Model	S-65
Measurements	Metric
Working height maximum*	21.80 m
Platform height maximum	19.80 m
Horizontal reach maximum	17.10 m
Below ground reach	2.72 m
A Platform length	0.91 m
B Platform width	2.44 m
C Height - stowed	2.72 m
Height - stowed Trax	2.77 m
D Length - stowed	9.42 m
Length - transport (jib tucked under)	7.60 m
E Width (with standard tires)	2.49 m
Width - Trax	2.59 m
F Wheelbase	2.51 m
G Ground clearance - center	0.37 m

Productivity

Lift capacity **227 kg**

Platform rotation	160°
Vertical jib rotation	135°
Turntable rotation	360° continuous
Turntable tailswing	1.22 m
Drive speed - 4WD stowed	4.8 km/h
- raised or extended	1.1 km/h

Gradeability - 4WD - stowed**

Turning radius - inside	2.36 m
- outside	5.72 m
Controls	12 V DC proportional
Tires - RT Lug	355/55D 625

Power

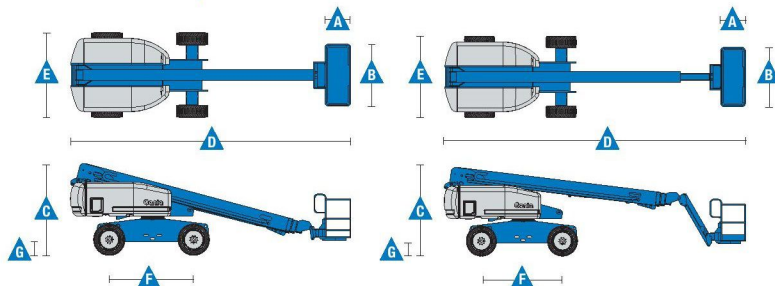
Power source	48 hp (35.79 kW) Deutz diesel T4f D2.9L4 48 hp (35.79 kW) Perkins diesel T4f 404F-22 74 hp (55 kW) Deutz turbo diesel T4i D2011L04i 75 hp (56 kW) Ford gas/LPG MSG425			
Auxiliary power unit	12 V DC		12 V DC	
Hydraulic tank capacity	45 gal	170 L	45 gal	170 L
Fuel tank capacity - diesel	35 gal	132 L	35 gal	132 L
- gas	30 gal	113.6 L	30 gal	113.6 L

Weight***

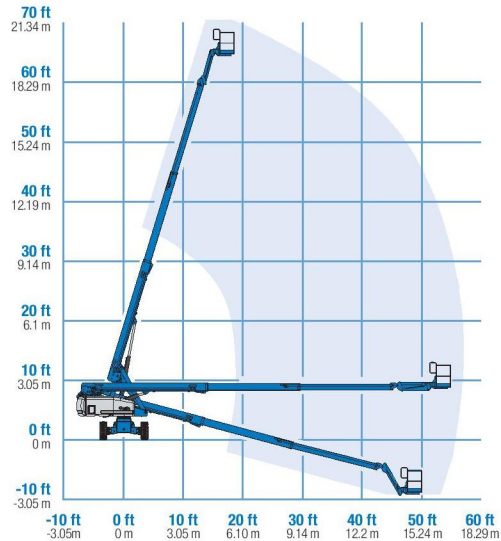
4WD **10,102 kg**

Standards Compliance

ANSI A92.5, CSA B354.4, EN 280, AS 1418.10



Range Of Motion S-65 (500 lb capacity)



* The metric equivalent of working height adds 2 m to platform height. U.S. adds 6 ft to platform height.

** Gradeability applies to driving on slopes, see operator's manual for details regarding slope ratings.

*** Weight will vary depending on slope, see operator's manual for details regarding slope ratings.